

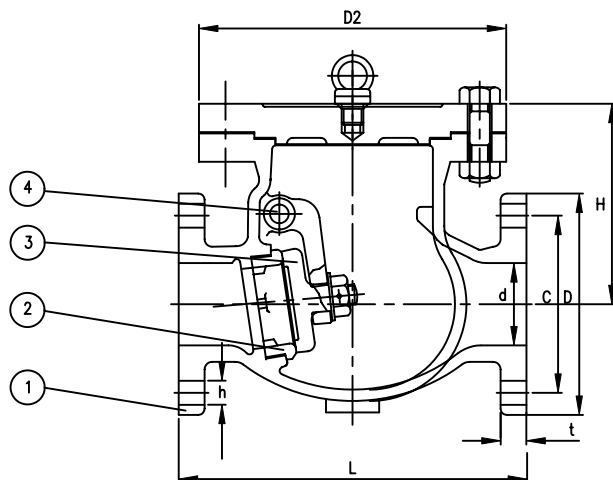
SERIES F7372 - JIS 5K

SERIES F7373 - JIS 10K

Cast Iron Swing Check Valves

Manufactured in accordance to JIS F7400

Flanges as per JIS B2220 - 5K & 10K



Part Nr.	Material	Code
1 - Body	Cast Iron	FC20
2 - Hinge	Brass	C3771BD
3 - Disc	Bronze	BC6
4 - Seat	Bronze	BC6

Nominal Pressure		5K	16K
Hydraulic	Body	1.03 [10.5]	2.06 [21.0]
Inspection	Seat	0.76 [7.7]	1.51 [15.4]

Type	Size	L	D	C	No.	h	t	H	D2	KG
F7372 5K	050	190	130	105	4	15	16	97	135	9.06
	065	220	155	130	4	15	18	119	155	13.9
	080	250	180	145	4	19	18	129	185	19.1
	100	280	200	165	8	19	20	146	205	27.1
	125	330	235	200	8	19	20	171	235	39
	150	380	265	230	8	19	22	198	265	53.7
	200	460	320	280	8	23	24	235	300	94.4
	250	550	385	345	12	23	26	290	390	150
F7373 10K	050	210	155	120	4	19	20	109	150	13.6
	065	240	175	140	4	19	22	126	170	19.6
	080	270	185	150	8	19	22	136	185	22.6
	100	300	210	175	8	19	24	153	205	30.9
	125	350	250	210	8	23	24	180	250	49.2
	150	400	280	240	8	23	26	205	275	64.9
	200	480	330	290	12	23	26	242	330	103