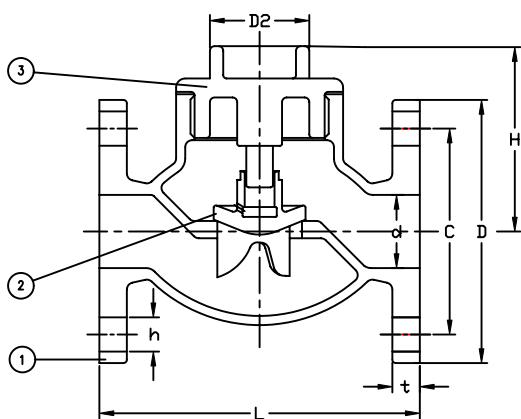


**SERIES F7356 - JIS 5K**  
**Bronze Lift Check Valve**

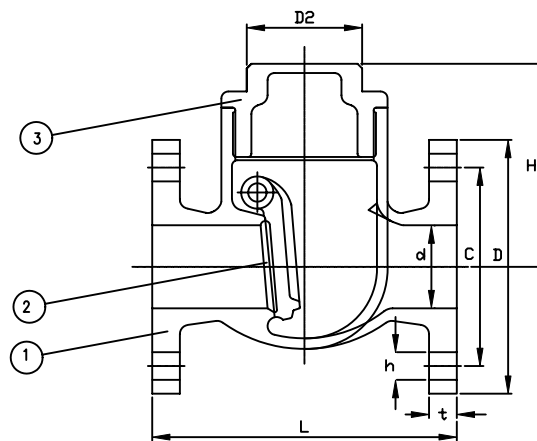
**SERIES F7371- JIS 5K**  
**Bronze Swing Check Valve**

Manufactured in accordance to JIS F7400

Flanges as per JIS B2220 - 5K



Series F7356



Series F7371

Part Nr.	Material	Code	Nominal Pressure		5K
1 - Body	Bronze	BC6	Hydraulic	Body	12kg
2 - Disc	Bronze	BC6	Inspection	Seat	8kg
3 - Bonnet	Bronze	BC6			

**DIMENSION TABLE FOR JIS F7356**

Size	L	D	C	No.	h	t	H	D2
15	100	80	60	4	12	9	72	35
20	100	85	65	4	12	10	78	37
25	120	95	75	4	12	10	77	41
32	140	115	90	4	15	12	81	41
40	160	120	95	4	15	12	91	46

**DIMENSION TABLE FOR JIS F7371**

Size	L	D	C	No.	h	t	H	D2
15	100	80	60	4	12	9	65	37
20	110	85	65	4	12	10	68	39
25	110	95	75	4	12	10	69	41
32	130	115	90	4	15	12	79	41
40	140	120	95	4	15	12	93	46