

PN 16 & PN 40 Full Bore Ball Valve

Cast Iron - Cast Steel - Stainless Steel Body

Cast Iron

Series 6202 ... PN 16

Cast Steel

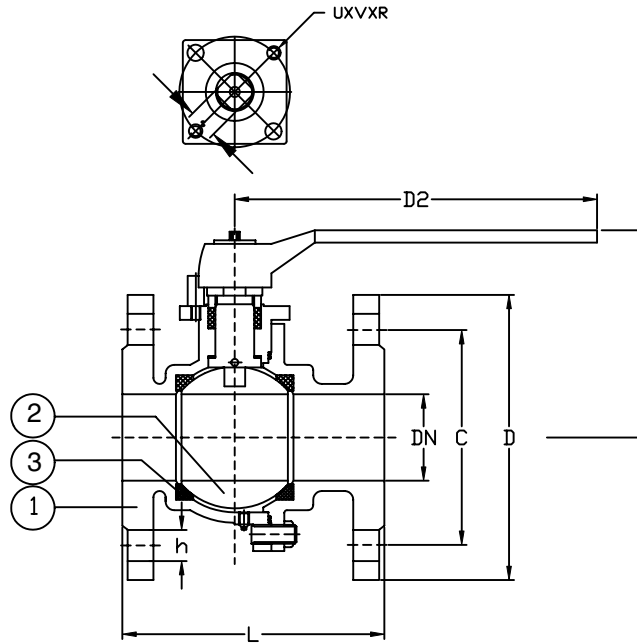
Series 6212 ... PN 16

Series 6215 ... PN 40

Stainless Steel

Series 6252 ... PN 16

Series 6255 ... PN 40



Face to Face according to DIN 3202-F4/5

Flanges according to DIN2501-PN16 & 40

Part Nr.	Cast Iron		Cast Steel		Stainless Steel		Size DN	Nominal Pressure PN	Hydraulic Inspection	
	Material	Code	Material	Code	Material	Code			Body	Seat
1 - Body	Cast Iron	GG25	Steel	WCB	SS316	CF8M	15 -150	16	25	16
2 - Ball	Brass	Ms58	SS316	CF8M	SS316	CF8M				
3 - Seat	Teflon	PTFE	Teflon	PTFE	Teflon	PTFE	15 -150	40	64	40

Size	L	H	D2	DIN PN16 (Iron - Steel - Stainless Steel)					DIN PN40 (Steel - Stainless Steel)					Iron Kg	Steel &SS Kg	
				D	C	No.	h	t	D	C	No.	h	t			
15	115	60	130	Same as DIN PN40					14	95	65	4	14	16	2.0	2.5
20	120	70	130	Same as DIN PN40					16	105	75	4	14	18	2.5	3.5
25	125	84	225	Same as DIN PN40					16	115	85	4	14	18	3.2	4.5
32	130	89	225	Same as DIN PN40					16	140	100	4	18	18	4.4	7
40	140	95	225	Same as DIN PN40					16	150	110	4	18	18	5.5	8
50	150	130	333	Same as DIN PN40					18	165	125	4	18	20	8.5	12
65	170	140	333	Same as DIN PN40					18	185	145	8	18	22	11.5	16
80	180	175	395	Same as DIN PN40					20	200	160	8	18	24	15.5	21
100	190	190	395	220	180	8	18	20	235	190	8	22	24	20	40	
125	325	320	600	250	210	8	18	22	270	220	8	25	26	30	60	
150	350	350	800	285	240	8	22	22	300	250	8	25	28	36	100	